

SITORAN TECHNOLOGY EMPRESAS

CATALOGO

TARIFA



*ABRAZADERAS*

---

---





# SISTEMAS DE FIJACIÓN

## FIXING SYSTEMS



### ÍNDICE - INDEX

Abrazaderas metálicas ligeras  
*Light duty pipe clamps*

pag. 4

Abrazaderas metálicas reforzadas  
*Heavy duty pipe clamps*

pag. 7

Fijaciones eléctricas  
*Electrical fixings*

pag.10

Abrazaderas de plástico  
*Plastic pipe clamps*

pag.11

Cinta perforada  
*Perforated banding*

pag.11

Anclajes, tacos, tornillos y accesorios  
*Anchors, plugs, screws and accesories*

pag.12

Fijaciones para sanitarios  
*Sanitary fixing*

pag.15

# ABRAZADERAS METÁLICAS LIGERAS LIGHT DUTY PIPE CLAMPS

## ABRAZADERA M6 PIPE CLAMP M6

Un lado abierto.  
Bicromatada.

*One side opened.  
Bichromated.*



Ref.	Ø	D	Pulg.	Unit.	euros 100 uds
RFSM0008	8	-	-	100	6,10
RFSM0010	10	1/8"	-	100	6,10
RFSM0012	12	1/4"	-	100	6,38
RFSM0014	14	-	-	100	6,51
RFSM0015	15	-	-	100	6,61
RFSM0016	16	-	-	100	6,68
RFSM0018	18	3/8"	-	100	6,78
RFSM0020	20	-	-	100	6,89
RFSM0022	22	1/2"	-	100	7,26
RFSM0024	24	-	-	100	7,46
RFSM0026	26	3/4"	-	100	7,94
RFSM0028	28	-	-	100	8,34
RFSM0030	30	-	-	100	8,41
RFSM0032	32	1"	-	50	8,95
RFSM0035	35	-	-	50	9,53
RFSM0037	37	-	-	50	10,38
RFSM0040	40	-	-	50	10,89
RFSM0042	42	1 1/4"	-	50	11,12
RFSM0047	47	1 1/2"	-	50	12,41
RFSM0050	50	-	-	50	13,13
RFSM0054	54	-	-	50	14,18
RFSM0060	60	2"	-	50	16,14
RFSM0063	63	-	-	50	17,06
RFSM0067	67	-	-	25	18,99
RFSM0070	70	-	-	25	20,35

## ABRAZADERA ISOFONICA M6 PIPE CLAMP WITH RUBBER M6

Un lado abierto.  
Bicromatada.  
Banda aislante de caucho.

*One side opened.  
Bichromated.  
Rubber isolation ring.*



Ref.	Ø	D	Pulg.	Unit.	euros 100 uds
RFSG0012	12	1/4"	-	100	9,80
RFSG0014	14-15	-	-	100	10,24
RFSG0016	16	3/8"	-	100	10,45
RFSG0018	18	-	-	100	11,09
RFSG0020	20	1/2"	-	100	11,53
RFSG0022	22	-	-	100	12,11
RFSG0026	26	3/4"	-	100	12,89
RFSG0028	28	-	-	100	13,40
RFSG0032	32	1"	-	50	15,30
RFSG0035	35	-	-	50	16,35
RFSG0042	42	1 1/4"	-	50	20,01
RFSG0048	48	1 1/2"	-	50	23,00
RFSG0054	54	-	-	25	25,61
RFSG0060	60	2"	-	25	27,68

## ABRAZADERA DOBLE M6 DOUBLE PIPE CLAMP M6

Bicromatada.  
Bichromated.



Ref.	Ø	D	Pulg.	Unit.	euros 100 uds
RFDGM0012	12	1/8"	-	50	9,67
RFDGM0014	14-15	1/4"	-	50	10,99
RFDGM0018	18	3/8"	-	50	12,35
RFDGM0022	22	1/2"	-	50	13,91
RFDGM0028	28	3/4"	-	50	17,64

## ABRAZADERA ISOFONICA DOBLE M6 DOUBLE PIPE CLAMP WITH RUBBER M6

Bicromatada.  
Banda aislante de caucho.

*Bichromated.  
Rubber isolation ring.*



Ref.	Ø	D	Pulg.	Unit.	euros 100 uds
RFDG0012	12	1/8"	-	50	17,09
RFDG0014	14-16	1/4"	-	50	18,99
RFDG0018	18	3/8"	-	50	21,76
RFDG0022	22	1/2"	-	50	23,68
RFDG0028	28	3/4"	-	50	29,45

## ABRAZADERA M6 CON TIRAFONDO PIPE CLAMP M6 WITH SCREW

Un lado abierto.  
Tirafondo M6x30.  
Bicromatada.

*One side opened.  
Screw M6x30.  
Bichromated.*



Ref.	Ø	D	Pulg.	Unit.	euros 100 uds
RFSMT008	8	-	-	100	8,41
RFSMT010	10	1/8"	-	100	8,55
RFSMT012	12	1/4"	-	100	8,78
RFSMT014	14	-	-	100	8,99
RFSMT015	15	-	-	100	9,09
RFSMT016	16	-	-	100	9,19
RFSMT018	18	3/8"	-	100	9,43
RFSMT020	20	-	-	100	9,73
RFSMT022	22	1/2"	-	100	9,84
RFSMT024	24	-	-	100	10,04
RFSMT026	26	3/4"	-	100	10,45
RFSMT028	28	-	-	100	10,65
RFSMT030	30	-	-	100	11,29
RFSMT032	32	1"	-	50	11,57
RFSMT035	35	-	-	50	12,35
RFSMT037	37	-	-	50	13,06
RFSMT040	40	-	-	50	13,63
RFSMT042	42	1 1/4"	-	50	14,18
RFSMT047	47	1 1/2"	-	50	15,57
RFSMT050	50	-	-	50	16,35
RFSMT054	54	-	-	50	17,64
RFSMT060	60	2"	-	50	19,67
RFSMT063	63	-	-	50	20,69
RFSMT067	67	-	-	25	19,20

# ABRAZADERAS METÁLICAS LIGERAS LIGHT DUTY PIPE CLAMPS



## ABRAZADERA DOBLE M6 CON TIRAFONDO DOUBLE PIPE CLAMP M6 WITH SCREW

Tirafondo M6x30.  
Bicromatada.  
Screw M6x30.  
Bichromated.



Ref.	Ø	D	Pulg.	Unit.	euros 100 uds
RFDMT012	12		1/8"	50	12,04
RFDMT014	14		1/4"	50	13,53
RFDMT018	18		3/8"	50	14,86
RFDMT022	22		1/2"	50	17,40
RFDMT028	28		3/4"	50	18,79

## ABRAZADERA "GAS-SYC" AMARILLA M6 YELLOW PIPE CLAMP "GAS-SYC" M6

Un lado abierto.  
Tirafondo M6x30.  
One side opened.  
Screw M6x30.



Ref.	Ø	D	Pulg.	Unit.	euros 100 uds
RFSRA012	12		1/4"	100	18,52
RFSRA015	15		-	100	18,98
RFSRA018	18		3/8"	100	19,99
RFSRA022	22		1/2"	100	20,81
RFSRA026	26		3/4"	100	22,33
RFSRA028	28		-	100	24,47
RFSRA032	32		1"	50	26,96
RFSRA035	35		-	50	28,08
RFSRA042	42		1 1/4"	50	32,86
RFSRA047	47		1 1/2"	50	38,16
RFSRA054	54		-	50	42,73
RFSRA060	60		2"	25	48,33

## ABRAZADERA "EXTRA SYC" ROBUST CLAMP "EXTRA SYC"

Uso doméstico, industrial y agrícola.  
Fleje protector del tubo y la manguera.  
Domestic, agricultural and industrial  
applications.  
Band to prevent damages of the  
conduit surface.



Ref.	Ø	D	mm.	Unit.	euros 100 uds
RFS00017	17		17-19	100	41,88
RFS00020	20		20-22	100	43,71
RFS00023	23		23-25	100	45,83
RFS00025	25		25-27	100	46,93
RFS00026	26		26-28	100	48,76
RFS00029	29		29-31	50	55,39
RFS00032	32		32-35	50	59,75
RFS00036	36		36-39	50	60,93
RFS00040	40		40-43	50	65,00
RFS00044	44		44-47	25	73,67
RFS00048	48		48-51	25	77,04
RFS00052	52		52-55	25	79,45
RFS00056	56		56-59	20	83,80
RFS00060	60		60-63	20	87,18
RFS00064	64		64-67	20	91,21
RFS00068	68		68-73	15	112,86
RFS00074	74		74-79	15	115,55
RFS00080	80		80-85	15	122,30
RFS00086	86		86-91	10	128,41
RFS00092	92		92-97	10	134,47
RFS00098	98		98-103	-	139,88
RFS00104	104		104-112	-	145,30
RFS00113	113		113-121	-	155,43
RFS00122	122		122-130	-	160,84
RFS00131	131		131-139	-	193,73
RFS00140	140		140-148	-	218,60
RFS00149	149		149-161	-	221,28
RFS00162	162		162-174	-	233,66
RFS00175	175		175-187	-	247,05
RFS00188	188		188-200	-	260,60
RFS00201	201		201-213	-	276,72
RFS00214	214		214-226	-	287,58
RFS00227	227		227-239	-	310,82
RFS00240	240		240-252	-	327,92

## ABRAZADERA "GAS-SYC" NEGRA M6 BLACK PIPE CLAMP "GAS-SYC" M6

Un lado abierto.  
Tirafondo M6x30.  
One side opened.  
Screw M6x30.



Ref.	Ø	D	Pulg.	Unit.	euros 100 uds
RFSRN010	10		1/8"	100	14,81
RFSRN012	12		1/4"	100	14,81
RFSRN014	14		-	100	15,06
RFSRN015	15		3/8"	100	15,18
RFSRN018	18		-	100	15,99
RFSRN020	20		1/2"	100	16,28
RFSRN022	22		-	100	16,65
RFSRN028	28		3/4"	100	19,58
RFSRN032	32		1"	50	21,57
RFSRN035	35		-	50	22,47
RFSRN038	38		-	50	24,42
RFSRN042	42		1 1/4"	50	26,29
RFSRN048	48		1 1/2"	50	30,52
RFSRN054	54		-	50	34,19

## ABRAZADERA "GAS-SYC" NEGRA DOBLE M6 BLACK DOUBLE PIPE CLAMP "GAS-SYC" M6

Tirafondo M6x30.  
Screw M6x30.



Ref.	Ø	D	Pulg.	Unit.	euros 100 uds
RFDSR010	12		1/8"	50	26,20
RFDSR014	15		1/4"	50	29,20
RFDSR018	18		3/8"	50	31,75
RFDSR022	22		1/2"	50	36,63
RFDSR028	28		3/4"	50	39,53





## ABRAZADERAS METÁLICAS LIGERAS LIGHT DUTY PIPE CLAMPS

### GRAPA SIMPLE CONDUIT CLIP

Acero zincado.  
Cables, tubos de acero y PVC.

*Zinc plated steel.  
Cables, steel and PVC pipes.*



Ref.	Ø	D	Pulg.	Unit.		euros
						100 uds
RFGA0006	6	-	-	100	2000	3,20
RFGA0008	8	-	-	100	2000	3,31
RFGA0010	10	-	1/8"	100	2000	3,37
RFGA0012	12	-	1/4"	100	2000	3,79
RFGA0014	14	-	-	100	2000	4,16
RFGA0015	15	-	-	100	2000	4,16
RFGA0016	16	-	3/8"	100	1000	4,36
RFGA0018	18	-	-	100	1000	5,08
RFGA0020	20	-	1/2"	100	1000	5,50
RFGA0022	22	-	-	100	1000	6,91
RFGA0024	24	-	-	100	1000	7,44
RFGA0026	26	-	3/4"	100	1000	8,33
RFGA0028	28	-	-	100	1000	8,76
RFGA0030	30	-	-	100	1000	8,62
RFGA0032	32	-	1"	100	1000	9,20
RFGA0037	37	-	-	100	1000	10,90
RFGA0040	40	-	-	50	500	11,51
RFGA0042	42	-	1 1/4"	50	500	12,00
RFGA0047	47	-	1 1/2"	50	500	15,16
RFGA0050	50	-	-	50	500	17,50

### ABRAZADERA "SIN FIN" HOSE CLAMP

Uso doméstico, industrial y agrícola.  
Fleje protector del tubo y la manguera.

*Domestic, agricultural and industrial  
applications.  
Band to prevent damages of the conduit  
surface.*



Ref.	Ø	D	mm.	Unit.		euros
						100 uds
RFSF0010	10	-	10-17	100	1000	23,33
RFSF0012	12	-	12-20	100	1000	23,33
RFSF0015	15	-	15-25	100	1000	25,68
RFSF0020	20	-	20-32	100	1000	28,03
RFSF0025	25	-	25-45	100	500	29,63
RFSF0032	32	-	32-50	100	500	31,91
RFSF0040	40	-	40-60	50	500	33,95
RFSF0050	50	-	50-70	50	250	37,04
RFSF0060	60	-	60-80	50	250	40,25
RFSF0070	70	-	70-90	50	250	42,96
RFSF0080	80	-	80-100	25	250	43,21
RFSF0090	90	-	90-110	25	125	49,38
RFSF0100	100	-	100-120	25	125	55,68
RFSF0110	110	-	110-130	25	125	59,57
RFSF0120	120	-	120-140	25	50	60,80
RFSF0130	130	-	130-150	25	50	61,73
RFSF0140	140	-	140-160	25	50	65,74

### GRAPA PUENTE BRIDGE CONDUIT CLIP

Acero zincado.  
Cables y tubos de acero y PVC.

*Zinc plated steel.  
Cables, steel and PVC pipes.*



Ref.	Ø	D	Pulg.	Unit.		euros
						100 uds
RFGAP008	8	-	-	100	2000	4,16
RFGAP010	10	-	1/8"	100	2000	4,43
RFGAP012	12	-	1/4"	100	2000	4,48
RFGAP014	14	-	-	100	1000	4,92
RFGAP015	15	-	-	100	1000	5,36
RFGAP016	16	-	3/8"	100	1000	6,06
RFGAP018	18	-	-	100	1000	6,63
RFGAP020	20	-	1/2"	100	1000	8,09
RFGAP022	22	-	-	100	1000	8,75
RFGAP024	24	-	-	100	1000	9,28
RFGAP026	26	-	3/4"	100	1000	10,58
RFGAP028	28	-	-	100	1000	11,11
RFGAP030	30	-	-	50	500	12,75
RFGAP032	32	-	1"	50	500	13,57
RFGAP037	37	-	-	50	500	13,84
RFGAP040	40	-	-	50	500	14,57
RFGAP042	42	-	1 1/4"	50	500	15,47
RFGAP047	47	-	1 1/2"	50	500	19,08
RFGAP050	50	-	-	50	500	19,99
RFGAP054	54	-	-	50	500	24,42
RFGAP060	60	-	2"	50	250	24,96

# ABRAZADERAS METÁLICAS REFORZADAS HEAVY DUTY PIPE CLAMPS



## ABRAZADERA ABIERTA M8 OPEN PIPE CLAMP M8

Tuerca rosca M8.  
Un lado abierto.  
Nut M8.  
One side opened.



Ref.	Ø	D		Unit.		euros 100 uds
		mm.	Pulg.			
RFRM0015	15	12-16	1/4"	100	1000	32,70
RFRM0018	18	17-19	3/8"	100	500	33,31
RFRM0022	22	20-24	1/2"	100	500	34,32
RFRM0028	28	25-28	3/4"	50	250	36,19
RFRM0035	35	32-36	1"	50	250	37,51
RFRM0042	42	40-43	1 1/4"	25	250	39,61
RFRM0048	48	47-50	1 1/2"	25	250	42,33
RFRM0054	54	50-54	-	25	250	43,28
RFRM0060	60	59-63	2"	25	125	45,14
RFRM0070	70	68-72	-	20	100	48,53
RFRM0075	75	75-80	2 1/2"	20	100	50,64
RFRM0090	90	87-92	3"	18	90	55,45
RFRM0100	100	99-105	3 1/2"	10	50	65,29
RFRM0110	110	107-112	-	15	30	70,27
RFRM0115	115	113-118	4"	15	30	77,57
RFRM0125	125	125-130	-	15	30	81,84
RFRM0133	133	132-137	-	-	25	91,03

## ABRAZADERA ISOFONICA ABIERTA M8 OPEN PIPE CLAMP WITH RUBBER M8

Tuerca rosca M8.  
Un lado abierto.  
Banda aislante de caucho.  
Nut M8.  
One side opened.  
Rubber isolation ring.



Ref.	Ø	D		Unit.		euros 100 uds
		mm.	Pulg.			
RFRG0015	15	12-16	1/4"	50	500	40,87
RFRG0018	18	17-19	3/8"	50	250	43,01
RFRG0022	22	20-24	1/2"	50	250	46,53
RFRG0028	28	25-28	3/4"	25	250	50,50
RFRG0035	35	32-36	1"	25	125	54,98
RFRG0042	42	40-43	1 1/4"	25	125	60,34
RFRG0048	48	47-50	1 1/2"	20	100	65,83
RFRG0054	54	50-54	-	20	100	70,38
RFRG0060	60	59-63	2"	20	100	74,68
RFRG0070	70	68-72	-	20	40	78,28
RFRG0075	75	75-80	2 1/2"	20	40	88,15
RFRG0090	90	87-92	3"	20	40	102,02
RFRG0100	100	99-105	3 1/2"	20	40	116,77
RFRG0110	110	107-112	-	-	25	131,22
RFRG0115	115	113-118	4"	-	20	138,04
RFRG0125	125	125-130	-	-	20	147,43
RFRG0133	133	132-137	-	-	20	167,17

## ABRAZADERA M8+M10 PIPE CLAMP M8+M10

Tuerca doble M8+M10.  
Instalaciones horizontales, verticales  
y suspendidas.  
Double nut M8+M10.  
Vertical, horizontal and suspended  
installations.



Ref.	Ø	D		Unit.		euros 100 uds
		mm.	Pulg.			
RFRMD018	18	15-19	3/8"	50	500	43,06
RFRMD022	22	20-25	1/2"	50	500	44,27
RFRMD028	28	26-30	3/4"	50	500	46,48
RFRMD035	35	32-36	1"	50	250	47,93
RFRMD040	40	38-43	1 1/4"	25	250	51,83
RFRMD048	48	47-51	1 1/2"	25	250	55,05
RFRMD054	54	53-56	-	25	125	56,34
RFRMD060	60	60-64	2"	25	125	58,43
RFRMD070	70	68-72	-	25	125	60,62
RFRMD075	75	75-80	2 1/2"	20	100	65,93
RFRMD083	83	81-86	-	16	80	68,14
RFRMD090	90	87-92	3"	16	80	72,99
RFRMD100	100	99-105	3 1/2"	16	80	77,79
RFRMD110	110	107-112	-	10	50	83,02
RFRMD115	115	113-118	4"	-	25	92,04
RFRMD125	125	125-130	-	-	25	97,06
RFRMD133	133	132-137	-	-	25	121,47
RFRMD140	140	138-142	5"	-	25	126,81
RFRMD150	150	148-152	-	-	25	149,49
RFRMD160	160	159-166	6"	-	25	158,03
RFRMD200	200	200-212	-	-	25	186,96
RFRMD220	220	215-220	8"	-	25	200,20
RFRMD250	250	248-252	-	-	20	235,04

## ABRAZADERA ISOFONICA M8+M10 PIPE CLAMP WITH RUBBER M8+M10

Tuerca doble M8+M10.  
Banda aislante de caucho.  
Instalaciones horizontales, verticales  
y suspendidas.  
Double nut M8+M10.  
Rubber isolating ring.  
Vertical, horizontal and suspended  
installations.



Ref.	Ø	D		Unit.		euros 100 uds
		mm.	Pulg.			
RFRGD018	18	15-19	3/8"	50	250	49,47
RFRGD022	22	20-25	1/2"	50	250	52,92
RFRGD028	28	26-30	3/4"	25	250	57,10
RFRGD035	35	32-36	1"	25	125	61,25
RFRGD040	40	38-43	1 1/4"	25	125	66,85
RFRGD048	48	47-51	1 1/2"	20	100	70,30
RFRGD054	54	53-56	-	20	100	74,96
RFRGD060	60	60-64	2"	20	100	78,47
RFRGD070	70	68-72	-	20	40	86,55
RFRGD075	75	75-80	2 1/2"	20	40	94,98
RFRGD083	83	81-86	-	20	40	100,11
RFRGD090	90	87-92	3"	20	40	106,80
RFRGD100	100	99-105	3 1/2"	20	40	118,58
RFRGD110	110	107-112	-	-	25	135,06
RFRGD115	115	113-118	4"	-	20	135,92
RFRGD125	125	125-130	-	-	20	145,00
RFRGD133	133	132-137	-	-	20	163,87
RFRGD140	140	138-142	5"	-	15	171,24
RFRGD150	150	148-152	-	-	15	183,14
RFRGD160	160	159-166	6"	-	15	197,06
RFRGD200	200	200-212	-	-	20	224,61
RFRGD220	220	215-220	8"	-	20	242,38
RFRGD250	250	248-252	-	-	15	318,47



# ABRAZADERAS METÁLICAS REFORZADAS HEAVY DUTY PIPE CLAMPS

## ABRAZADERA "PREMIUM" M8/M10 PIPE CLAMP "PREMIUM" M8/M10

Sistema tornillo imperdible.  
Tuerca soldada por puntos.  
*Safety screw system.  
Welded nut.*



Ref.	Pulg.	D mm.	Tuerca	Unit.		euros 100 uds
RAF35102	3/8"	16-18	M8	2	100	64,13
RAF35103	1/2"	20-22	M8	2	100	64,13
RAF35104	3/4"	25-28	M8	2	100	65,08
RAF35105	1"	31-34	M8	2	100	66,67
RAF35106	1 1/4"	39-43	M8	2	50	72,06
RAF35107	1 1/2"	45-48.5	M8	2	50	73,97
RAF35108	2"	58-61	M8	2	50	78,10
RAF3510A	2 1/2"	73-76.5	M10	2	20	142,54
RAF3510B	3"	86-89	M10	2	20	148,57
RAF3510C	4"	110-115	M10	2	20	167,94

## ABRAZADERA "PREMIUM" M8/M10 CON TACO Y TORNILLO PIPE CLAMP "PREMIUM" M8/M10 WITH PLUG AND SCREW

Sistema tornillo imperdible.  
Tuerca soldada por puntos.  
*Safety screw system.  
Welded nut.*



Ref.	Pulg.	mm.	D Tornillo	Taco	Unit.		euros 100 uds
RAF35502	3/8"	16-18	M8x100	10x70	2	100	73,33
RAF35503	1/2"	20-22	M8x100	10x70	2	100	73,33
RAF35504	3/4"	25-28	M8x100	10x70	2	100	77,14
RAF35505	1"	31-34	M8x100	10x70	2	50	80,63
RAF35506	1 1/4"	39-43	M8x100	10x70	2	50	86,67
RAF35507	1 1/2"	45-48.5	M8x100	10x70	2	50	90,16
RAF35508	2"	58-61	M8x100	10x70	2	50	97,78
RAF3550A	2 1/2"	73-76.5	M10x120	14x70	2	20	186,03
RAF3550B	3"	86-89	M10x120	14x70	2	20	204,44
RAF3550C	4"	110-115	M10x120	14x70	2	20	226,03

## ABRAZADERA ISOFONICA "PREMIUM" M8/M10 PIPE CLAMP "PREMIUM" M8/M10 WITH RUBBER

Sistema tornillo imperdible.  
Tuerca soldada por puntos.  
Goma vulcanizada EPDM.  
*Safety screw system.  
Welded nut.  
Vulcanized EPDM rubber.*



Ref.	Pulg.	D mm.	Tuerca	Unit.		euros 100 uds
RAF351G1	15MM	15-18	M8	2	50	144,76
RAF351G2	3/8"	17-19	M8	2	50	144,76
RAF351G3	1/2"	21-23	M8	2	50	144,76
RAF351G4	3/4"	26.5-28	M8	2	50	154,60
RAF351G5	1"	33-35	M8	2	50	179,05
RAF351G6	1 1/4"	42-45	M8	2	50	195,87
RAF351G7	1 1/2"	48-50	M8	2	50	214,29
RAF351G8	2"	60-64	M8	2	20	237,78
RAF351GA	2 1/2"	74-78	M10	1	20	487,62
RAF351GB	3"	87-91	M10	1	10	513,02
RAF351GC	4"	112-114	M10	1	10	568,89

## ABRAZ. ISOFONICA "PREMIUM" M8/M10 CON TACO Y TORNILLO PIPE CLAMP "PREMIUM" M8/M10 WITH RUBBER, PLUG AND SCREW

Sistema tornillo imperdible.  
Tuerca soldada por puntos.  
Goma vulcanizada EPDM.  
*Safety screw system.  
Welded nut.  
Vulcanized EPDM rubber.*



Ref.	Pulg.	mm.	D Tornillo	Taco	Unit.		euros 100 uds
RAF355G1	15MM	15-18	M8x100	10x70	2	50	153,97
RAF355G2	3/8"	17-19	M8x100	10x70	2	50	153,97
RAF355G3	1/2"	21-23	M8x100	10x70	2	50	153,97
RAF355G4	3/4"	26.5-28	M8x100	10x70	2	50	165,71
RAF355G5	1"	33-35	M8x100	10x70	2	50	192,38
RAF355G6	1 1/4"	42-45	M8x100	10x70	2	50	212,70
RAF355G7	1 1/2"	48-50	M8x100	10x70	2	50	230,48
RAF355G8	2"	60-64	M8x100	10x70	2	20	256,83
RAF355GA	2 1/2"	74-78	M10x120	14x75	2	20	533,97
RAF355GB	3"	87-91	M10x120	14x75	2	20	570,16
RAF355GC	4"	112-114	M10x120	14x75	2	10	624,13

## ABRAZADERA "PREMIUM" PARA TUBO POLIETILENO M10 PIPE CLAMP "PREMIUM" FOR POLYETHYLENE PIPES M10

Sistema tornillo imperdible.  
Tuerca soldada M10.  
*Safety screw system.  
Welded nut M10.*



Ref.	Ø	D	Tuerca	Unit.		euros 100 uds
RAF61040	40	M10	M10	2	30	119,05
RAF61050	50	M10	M10	2	30	126,03
RAF61063	63	M10	M10	2	30	136,51
RAF61075	75	M10	M10	2	30	145,08
RAF61090	90	M10	M10	2	20	154,29
RAF61110	110	M10	M10	2	20	170,79
RAF61125	125	M10	M10	2	20	186,03
RAF61140	140	M10	M10	2	10	207,30
RAF61160	160	M10	M10	2	10	270,79
RAF61200	200	M10	M10	2	10	308,89

## ABRAZ. "PREMIUM" PARA TUBO POLIETILENO M10 CON TACO Y TORN. PIPE CLAMP "PREMIUM" FOR POLYETHYLENE PIPES M10 , PLUG AND SCREW

Sistema tornillo imperdible.  
Tuerca soldada M10.  
*Safety screw system.  
Welded nut M10.*



Ref.	Ø	D	Tornillo	Taco	Unit.		euros 100 uds
RAF36040	40	M10x120	M10x120	14x70	2	30	162,22
RAF36050	50	M10x120	M10x120	14x70	2	30	170,79
RAF36063	63	M10x120	M10x120	14x70	2	30	183,81
RAF36075	75	M10x120	M10x120	14x70	2	30	192,38
RAF36090	90	M10x120	M10x120	14x70	2	20	205,71
RAF36100	100	M10x120	M10x120	14x70	2	20	220,00
RAF36110	110	M10x120	M10x120	14x70	2	20	220,00
RAF36125	125	M10x120	M10x120	14x70	2	20	234,60
RAF36140	140	M10x120	M10x120	14x70	2	10	266,67
RAF36160	160	M10x120	M10x120	14x70	2	10	320,95
RAF36200	200	M10x120	M10x120	14x70	2	10	393,65



# ABRAZADERAS METÁLICAS REFORZADAS HEAVY DUTY PIPE CLAMPS



## ABRAZADERA COLGANTE "PERA" SPRINKLER PIPE CLAMP

Tuberías suspendidas, especialmente instalaciones contraincendios.

*Suspending pipes, specially in fire fighting systems.*



Ref.	Ø	D Plug.	Tuerca	Unit.		euros 100 uds
RFPO0026	26	3/4"	M8	100	200	66,18
RFPO0035	35	1"	M8	100	200	69,98
RFPO0040	40	1 1/4"	M8	50	100	76,10
RFPO0048	48	1 1/2"	M8	50	100	77,97
RFPO0060	60	2"	M8	40	80	81,48
RFPO0075	75	2 1/2"	M10	30	60	118,71
RFPO0090	90	3"	M10	20	40	122,28
RFPO0100	100	3 1/2"	M10	15	30	134,01
RFPO0115	115	4"	M10	10	20	140,87
RFPO0140	140	5"	M10	-	15	225,81
RFPO0160	160	6"	M10	-	15	254,99

## ABRAZADERA ISOFÓNICA COLGANTE "PERA" SPRINKLER PIPE CLAMP WITH RUBBER

Banda aislante de caucho.  
Tuberías suspendidas, especialmente instalaciones contraincendios.

*Rubber isolation ring.  
Suspending pipes, specially in fire fighting systems.*



Ref.	Ø	D Pulg.	Tuerca	Unit.		euros 100 uds
RFPG0026	26	3/4"	M8	80	160	82,96
RFPG0035	35	1"	M8	80	160	87,32
RFPG0040	40	1 1/4"	M8	50	100	94,82
RFPG0048	48	1 1/2"	M8	40	80	101,09
RFPG0060	60	2"	M8	25	50	112,26
RFPG0075	75	2 1/2"	M10	25	50	163,58
RFPG0090	90	3"	M10	15	30	190,44
RFPG0100	100	3 1/2"	M10	-	30	193,47
RFPG0115	115	4"	M10	-	20	214,28
RFPG0140	140	5"	M10	-	15	309,94
RFPG0160	160	6"	M10	-	15	343,14

## ABRAZADERA DESAGÜE EMPOTRAR CAST-IN DRAIN PIPE CLAMP

Para bajantes de desagüe.  
*Drain-pipes and guttering.*



Ref.	Ø	D mm.	Unit.		euros 100 uds
RFEDE050	50	50-54	20	40	85,10
RFEDE075	75	75-80	12	24	92,87
RFEDE090	90	82-90	12	24	98,42
RFEDE110	110	106-112	-	20	109,15
RFEDE125	125	124-130	-	20	115,44
RFEDE160	160	159-165	-	15	159,14
RFEDE200	200	199-212	-	14	203,50
RFEDE250	250	249-254	-	12	272,69
RFEDE315	315	314-319	-	10	305,25

## ABRAZADERA DESAGÜE M8 DRAIN PIPE CLAMP M8

Para bajantes de desagüe.  
*Drain-pipes and guttering.*



Ref.	Ø	D mm.	Unit.		euros 100 uds
RFDES075	75	75-80	20	200	62,34
RFDES090	90	82-90	20	100	66,04
RFDES110	110	106-112	20	100	72,15
RFDES125	125	124-130	15	75	76,03
RFDES160	160	159-165	32	64	96,25
RFDES200	200	199-212	25	50	110,23



## ABRAZADERAS METÁLICAS REFORZADAS HEAVY DUTY PIPE CLAMPS

### ABRAZADERA "GAS-SYC" AMARILLA M8/M10 YELLOW PIPE CLAMP "GAS-SYC" M8/M10

Por su color amarillo se utiliza como identificación de la conducción de gas.

*The yellow colour is used to identify the conduit of gas.*



Ref.	Ø	mm.	D Pulg.	Rosca	Unit.		euros 100 uds
RFRR0018	18	15-18	3/8"	M8	100	500	52,80
RFRR0022	22	20-24	1/2"	M8	100	500	55,46
RFRR0028	28	26-30	3/4"	M8	50	250	55,66
RFRR0035	35	32-36	1"	M8	50	250	59,25
RFRR0040	40	38-42	1 1/4"	M8	25	250	65,70
RFRR0048	48	47-50	1 1/2"	M8	25	250	70,92
RFRR0054	54	51-55	-	M8	25	250	73,73
RFRR0060	60	60-64	2"	M8	25	125	77,36
RFRR0075	75	75-80	2 1/2"	M10	20	100	91,68
RFRR0090	90	82-90	3"	M10	18	90	101,82
RFRR0100	100	100-106	3 1/2"	M10	15	75	108,36
RFRR0115	115	114-119	4"	M10	15	30	131,60
RFRR0125	125	124-131	-	M10	15	30	143,03
RFRR0140	140	133-140	5"	M10	-	25	153,81
RFRR0160	160	159-165	6"	M10	-	25	168,46

### ABARCÓN EN "U" "U" BOLT

Los abarcónes M6 y M8 llevan las tuercas y arandelas colocadas. Acero zincado.

*For M6 & M8 sizes, washers & nuts assembled. Zinc plated steel.*



Ref.	Pulg.	D mm.	Rosca	Unit.		euros 100 uds
RFAB0002	3/8"	17,1	M6	200	1200	8,88
RFAB0003	1/2"	21,3	M6	200	1200	9,73
RFAB0004	3/4"	26,9	M6	150	900	11,39
RFAB0005	1"	33,7	M6	125	750	12,14
RFAB0006	1 1/4"	42,4	M6	100	600	13,71
RFAB0007	1 1/2"	48,3	M8	50	300	29,54
RFAB0008	2"	60,3	M8	50	300	33,60
RFAB000A	2 1/2"	76,1	M10	25	150	50,82
RFAB000B	3"	88,9	M10	25	125	61,71
RFAB000C	3 1/2"	101,6	M10	20	120	66,98
RFAB000D	4"	114,3	M10	20	100	72,17
RFAB000E	5"	139,7	M10	20	100	78,43
RFAB000F	6"	168,3	M10	15	75	122,49
RFAB000H	8"	219,1	M10	10	50	143,63
RFAB000J	10"	273,0	M10	-	10	172,90
RFAB000L	12"	323,9	M14	-	10	414,63
RFAB000N	14"	355,6	M14	-	10	455,28

## FIJACIONES ELÉCTRICAS ELECTRICAL FIXINGS

### BRIDA NYLON INCOLORA NYLON STRIP

Color natural.  
Bordes redondeados.

*Natural colour.  
Rounded edges.*



Ref.	Anch.	D mm. Long	Ø max.	Unit.	euros 100 uds
RFBI2510	2,5	100	21	100	0,53
RFBI3620	3,6	200	50	100	2,12
RFBI3630	3,6	300	80	100	3,86
RFBI3637	3,6	370	102	100	5,18
RFBI4818	4,8	180	45	100	2,74
RFBI4830	4,8	300	76	100	4,94
RFBI4838	4,8	380	102	100	7,41
RFBI7820	7,8	200	50	100	5,82
RFBI7830	7,8	300	76	100	9,45
RFBI7840	7,8	400	102	100	12,08

### BRIDA NYLON NEGRA BLACK NYLON STRIP

Color negro.  
Mayor resistencia a rayos ultravioleta.  
Bordes redondeados.

*Black colour.  
Higher resistance to ultraviolet rays.  
Rounded edges.*



Ref.	Anch.	D mm. Long	Ø max.	Unit.	euros 100 uds
RFBN2510	2,5	100	21	100	0,53
RFBN3620	3,6	200	50	100	2,12
RFBN3630	3,6	300	80	100	3,86
RFBN3637	3,6	370	102	100	5,18
RFBN4818	4,8	180	45	100	2,74
RFBN4830	4,8	300	76	100	4,94
RFBN4838	4,8	380	102	100	7,41
RFBN7820	7,8	200	50	100	5,82
RFBN7830	7,8	300	76	100	9,45
RFBN7840	7,8	400	102	100	12,08

### ACCESORIO DE FIJACION PARA BRIDA NYLON FIXING ACCESSORY FOR NYLON STRIP

Color negro.  
Para fijación de bridas de nylon sin necesidad de tornillo.

*Black colour.  
Quick fastening of nylon cable ties.*



Ref.	Art.	Unit.	euros 100 uds
RFTB0010	Taco brida de 10 mm.	100	6,17

# ABRAZADERAS DE PLÁSTICO PLASTIC PIPE CLAMPS



## ABRAZADERA NYLON PARA TUBO COBRE NYLON PIPE CLAMP FOR COPPER PIPE

Abrazadera sencilla.  
Single nylon collar.



Ref.	Ø	D	Unit.	euros 100 uds
RAF27010	10	3x30	10	29,84
RAF27012	12	3x30	10	29,84
RAF27014	14	4x45	10	29,84
RAF27015	15	4x45	10	29,84
RAF27016	16	4x45	10	32,38
RAF27018	18	4x45	10	37,14
RAF27020	20	4x45	10	47,94
RAF27022	22	4x45	10	48,25
RAF27028	28	5x60	5	89,33

## ABRAZADERA NYLON DOBLE PARA TUBO COBRE DOUBLE NYLON PIPE CLAMP FOR COPPER PIPE

Abrazadera doble.  
Double nylon collar.



Ref.	Ø	D	Unit.	euros 100 uds
RAF27D10	10	4x45	10	40,63
RAF27D12	12	4x45	10	40,63
RAF27D14	14	4x45	10	40,63
RAF27D15	15	4x45	10	45,08
RAF27D16	16	4x45	10	46,98
RAF27D18	18	5x60	10	54,60
RAF27D20	20	5x60	10	63,49
RAF27D22	22	5x60	10	66,67
RAF27D28	28	5x60	5	113,33

## ABRAZADERA SINTETICA PARA DESAGÜES SYNTHETIC DRAIN PIPE CLAMP

Montaje con tornillo o varilla  
roscada M6-M8.  
Resistente a rayos ultravioleta.  
Color negro.  
Permite deslizamientos por posibles  
dilataciones.

Assembly with M6-M8 screws, or threaded  
rods.  
Resistant to ultraviolet rays.  
Black colour.  
Slide is allowed for possible expansion.



Ref.	D Ø	Unit.	euros 100 uds
RAFDE110	110	100	88,89
RAFDE125	125	90	92,59

## CLIPS DE POLIPROPILENO POLYPROPYLENE CLIPS

No presenta casquillo interior.  
Without screw-in.



Ref.	D Ø	Unit.	euros 100 uds
RAF27218	16-18	50	13,37
RAF27222	20-22	50	15,59
RAF27228	28	25	20,04
RAF27235	35	25	22,30

## CINTA PERFORADA Perforated banding

### CINTA PERFORADA PERFORATED BANDING

Ideal para bajantes de PVC, baterías  
de tubos, suspensión de  
conducciones, etc.

Perfect for vertical PVC tables, parallel  
conduits and superficial installations.



Ref.	D mm.	Long. m	Unit.	euros 100 uds
RFCP0017	17 x 0.8	10	10	491,79

### ANCLAJE TORNILLO THREAD ANCHOR

Acero estampado bicromatado.  
Stamped bichromated steel.



Ref.	Anclaje	mm.	Unit.	Unit.	euros 100 uds
RFAT0645	M6x45	8x45	150	1500	17,55
RFAT0860	M8x60	10x60	100	1000	27,47
RFAT1070	M10x70	12x70	50	500	47,31
RFAT1280	M12x80	16x80	50	500	84,71

### ANCLAJE ESPARRAGO BOLT ANCHOR

Acero estampado bicromatado.  
Stamped bichromated steel.



Ref.	Anclaje	Taladro	Unit.	Unit.	euros 100 uds
RFAE0645	M6x45	8x45	150	1500	16,79
RFAE0860	M8x60	10x60	100	1000	25,95
RFAE1070	M10x70	12x70	50	500	45,79
RFAE1280	M12x80	16x80	50	500	83,94

### TACOS DE FIJACION DE LATON BRASS FIXING PLUGS

Para la fijación de cargas ligeras  
en materiales macizos.

For fixing light weights  
in solid materials.



Ref.	Anclaje	D	Taladro mm	Unit.	Unit.	euros 100 uds
RFTL0416	M4x16	5,5	5,5x16	200	4000	18,72
RFTL0520	M5x20	6,5	6,5x20	200	4000	21,98
RFTL0624	M6x24	8	8x24	200	4000	25,83
RFTL0830	M8x30	10	10x30	200	2000	43,29
RFTL1033	M10x33	12	12x33	100	1000	68,88
RFTL1240	M12x40	15	15x40	100	1000	134,88

### TACOS DE FIJACION FIXING PLUGS

Con aletas para evitar la rotación  
durante el montaje.

With flights to avoid rotation  
during setting.



Ref.	D Ø	Unit.	Unit.	euros 100 uds
RFTN0630	M6x30	100	2000	2,03
RFTN0840	M8x40	100	2000	2,88
RFTN1060	M10x60	50	500	4,92
RFTN1260	M12x60	50	500	8,14
RFTN1475	M14x75	30	300	12,21

### TACO MAX "MAX" PLUG

Fabricado en nylon 6.6. Color blanco.  
Instalación material hueco: pladur, falsos  
techos, etc.

Utilizar broca de 10 mm.

Nylon 6.6. White colour.

For cavity materials, pladur,  
false ceilings, etc.

Use a drill bit of 10 mm.



Ref.	D Ø	Unit.	Unit.	euros 100 uds
RFTMAX10	10 x 45	100	1500	7,78

# ANCLAJES, TACOS, TORNILLOS Y ACCESORIOS ANCHORS, PLUGS, SCREWS AND ACCESORIES



## TORNILLO DOBLE ROSCA M8/M10 DOUBLE THREAD SCREW M8/M10

Tornillo doble rosca M8 o M10.  
M8 or M10 double thread screw.



Ref.	Rosca	D mm.	Unit.		euros 100 uds
RFTD0850	M8	50	100	1000	6,26
RFTD0880	M8	80	100	1000	10,44
RFTD8100	M8	100	100	1000	13,05
RFTD8120	M8	120	100	1000	15,66
RFTD1080	M10	80	100	1000	15,66
RFTD1010	M10	100	100	1000	18,84
RFTD1012	M10	120	100	1000	23,80
RFTD1013	M10	130	100	1000	27,27
RFTD1014	M10	140	50	500	30,24
RFTD1015	M10	150	50	500	34,97

## TIRAFONDO PARA ABRAZADERA M6/M8 SHOULDER SCREW M6/M8

Tirafondo para abrazadera M6 o M8.  
M6 or M8 shoulder screw.



Ref.	Rosca	D mm.	Unit.		euros 100 uds
RFTR0625	M6	25	100	2000	2,15
RFTR0630	M6	30	100	2000	2,52
RFTR0640	M6	40	100	2000	3,00
RFTR0650	M6	50	100	2000	3,58
RFTR0840	M8	40	100	2000	5,23
RFTR0860	M8	60	100	2000	6,87

## TORNILLO M6 PARA ABRAZADERA SCREW M6

Tornillo hexagonal acero zincado.  
Hexagonal zinc plated screw.



Ref.	Rosca	D mm.	Unit.		euros 100 uds
RFTRA015	M6	15	100	2000	3,31
RFTRA020	M6	20	100	2000	3,61

## FLORON PLANO CROMADO FLAT SEPARATION ROSE CHROME

Acero estampado cromado.  
Chromed stamped steel.



Ref.	D Ø	Unit.		euros 100 uds
RFFPC025	25	100	2000	2,73

## FLORON SEPARADOR SEPARATION ROSE

Acero estampado bicromatado.  
Bichromated stamped steel.



Ref.	Ø	D Altura	Unit.		euros 100 uds
RFFS0027	27	9	100	2000	2,80
RFFS0032	32	14	100	2000	3,86
RFFS0038	38	19	100	2000	6,22
RFFS0040	40	24	100	1000	8,21
RFFS0042	42	30	100	1000	9,74

## FLORON PLANO FLAT SEPARATION ROSE

Acero estampado bicromatado.  
Bichromated stamped steel.



Ref.	D Ø	Unit.		euros 100 uds
RFFPB025	25	100	2000	2,91
RFFPB030	30	100	2000	3,48
RFFPB040	40	100	2000	5,58



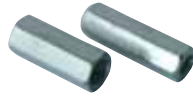


# ANCLAJES, TACOS, TORNILLOS Y ACCESORIOS ANCHORS, PLUGS, SCREWS AND ACCESORIES

## MANGUITO HEXAGONAL HEXAGONAL CONNECTING NUT

Para la prolongación o unión de sujeciones estandar.

For extension or union of fixing systems.

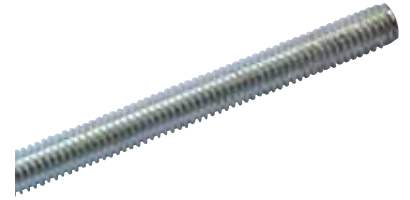


Ref.	D	Long.	Unit.		euros 100 uds
RFMH0620	M6	20	150	1500	10,38
RFMH0630	M6	30	150	1500	12,97
RFMH0820	M8	20	100	1000	11,70
RFMH0830	M8	30	100	1000	15,36
RFMH1030	M10	30	50	500	23,91

## VARILLA ROSCADA THREADED ROD

Acero zincado.  
DIN 975.

Zinc plated steel.  
DIN 975.

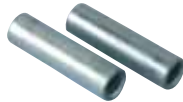


Ref.	Rosca	D	Long./mm.	Unit.	
T975004	M4		1000	100	-
T975005	M5		1000	100	-
T975006	M6		1000	50	-
T975008	M8		1000	25	-
T975010	M10		1000	25	-
T975012	M12		1000	20	-

## MANGUITO REDONDO ROUND CONNECTING NUT

Para la prolongación o unión de sujeciones estandar.

For extension or union of fixing systems.



Ref.	Rosca	D	Long.	Unit.		euros 100 uds
RFMR0620	M6		20	150	1500	8,45
RFMR0630	M6		30	150	1500	9,92
RFMR0820	M8		20	100	1000	11,14
RFMR0830	M8		30	100	1000	12,59
RFMR1030	M10		30	50	500	17,93

## TUERCA HEXAGONAL HEXAGONAL NUT

Acero zincado.  
Clase 8.  
DIN 934.

Zinc plated steel.  
Grade 8.  
DIN 934.



Ref.	Rosca	D	DIN	Unit.	
T934004	M4		934	250	10000
T934005	M5		934	250	10000
T934006	M6		934	150	6000
T934008	M8		934	125	4500
T934010	M10		934	100	3600
T934012	M12		934	70	2520

## ESPARRAGO SEPARADOR THREADED STUD

Para la prolongación o unión de sujeciones estandar.  
Acero zincado.

For extension or union of fixing systems.  
Zinc plated steel.



Ref.	Rosca	D	Long.	Unit.		euros 100 uds
RFES0620	M6		20	200	2000	1,50
RFES0630	M6		30	200	2000	2,25
RFES0820	M8		20	200	2000	2,67
RFES0830	M8		30	200	2000	3,99
RFES1030	M10		30	150	1500	6,46

## ARANDELA PLANA WASHER

Acero zincado.  
Zinc plated steel.



Ref.	Rosca	D	DIN	Unit.	
T1250004	M4		125	300	12000
T1250005	M5		125	300	12000
T1250006	M6		125	150	6000
T1250008	M8		125	125	5000
T1250010	M10		125	100	4000
T1250012	M12		125	100	4000
T9021006	M6		9021	100	4000
T9021008	M8		9021	100	4000
T9021010	M10		9021	50	2000
T9021012	M12		9021	40	800

# FIJACIONES PARA SANITARIOS

## SANITARY FIXING



### FIJACION PARA LAVABOS

#### WASHBASIN FIXING ELEMENTS

Conjunto de taco de nylon + tornillo de doble rosca + tuerca de acero.

Set of nylon plugs + double thread screws + steel nuts.



Ref.	Tornillo	D	Taco	Bolsas		euros bolsa/2 uds
RFFL0811	M8x110		10x50	15	75	0,80
RFFL1012	M10x120		12x60	15	75	1,15

### FIJACION PARA SANITARIOS DE PARED

#### WALL SANITARY FIXING ELEMENTS

Conjunto de taco de nylon + tornillo de doble rosca + tuerca de nylon.

Set of nylon plugs + double thread screws + nylon nuts.



Ref.	Tornillo	D	Taco	Bolsas		euros bolsa/2 uds
RFFP0811	M8x110		10x50	15	75	0,78
RFFP1012	M10x120		12x60	15	75	1,05

### FIJACION PARA WC Y BIDET

#### FIXING ELEMENTS FOR WC AND BIDET

Conjunto de taco de nylon + tornillo de doble rosca + tuerca de acero.  
Tornillo disponible en inox y latón.

Set of nylon plugs + double thread screws + steel nuts.

Screw available in inox and brass.



Ref.	Tornillo	D	Taco	Bolsas		euros bolsa/2 uds
RFFWI575	INOX.	M5x75	8x40	25	250	0,81
RFFWL575	LATON	M5x75	8x40	25	250	0,92

### FIJACION PARA CALENTADORES

#### BOILER FIXING ELEMENTS

Conjunto de taco de nylon + alcayata.

Nylon plug with hanger.



Ref.	Tornillo	D	Taco	bolsas		euros bolsa/2 uds
RFFC0865	M8x65		10x60	25	250	0,51
RFFC1075	M10x75		12x70	25	250	0,81



**SITORAN TECHNOLOGY**

Pol. Ind. Oeste  
Calle Fortuna 5  
30820 Alcantarilla  
Murcia - España  
Telf./Centralita +34968800008  
mf@sitoran.com

